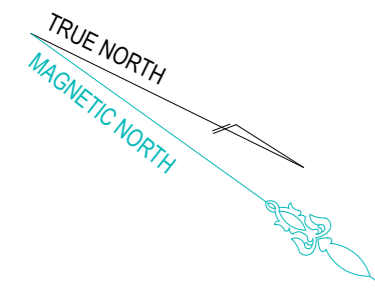


BEARINGS SHOWN HAVE BEEN DEDUCED FROM LAND REGISTRY SERVICES PLANS AND ARE RELATED TO MAGNETIC NORTH. TRUE NORTH IS APPROXIMATE ONLY. FURTHER INVESTIGATION WILL BE REQUIRED TO DETERMINE ACCURATE TRUE NORTH.

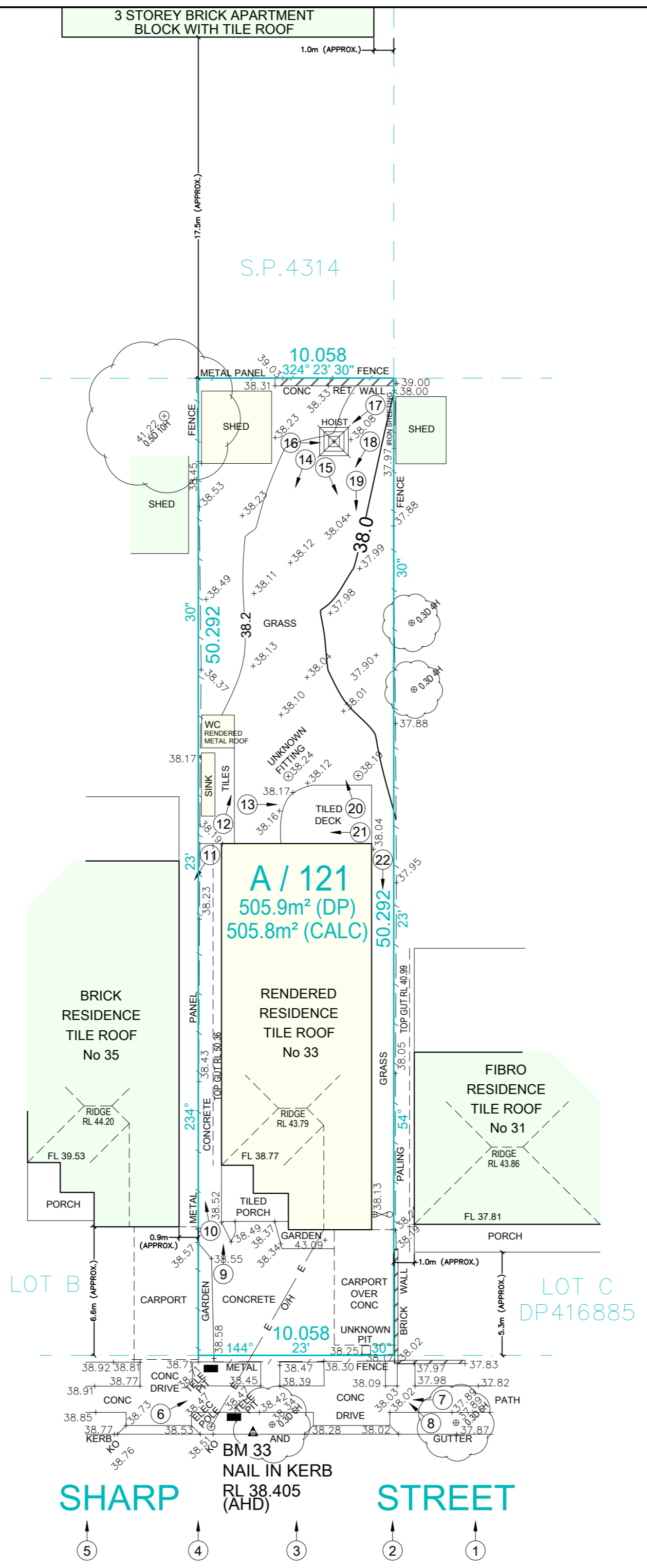


**LEGEND**

- HOT WATER TANK
- WATER METER
- TELECOM PIT
- MANHOLE (SEWER/STORMWATER)
- SEWER TERMINAL MAINTENANCE SHAFT
- SEWER MAINTENANCE SHAFT
- VEHICLE CROSSING
- BOK BACK OF KERB
- IKK INVERT OF KERB
- LOG LIP OF GUTTER
- KERB INLET PIT
- LIGHT POLE
- ELECTRICITY POLE
- ELECTRICITY PILLAR
- HYDRANT
- STOP VALVE
- KERB OUTLET
- SERVICE CONDUIT
- TREE (DIAM/HEIGHT)
- GARDEN BED
- SHRUB
- DENOTES PHOTO POINT
- DENOTES TELEPHONE BOOTH



DATUM OF LEVELS: AUSTRALIAN HEIGHT DATUM  
 ORIGIN OF LEVELS: SSM 133435 RL 33.621  
 SOURCE OF LEVELS: SCIMS



**STRUCterre consulting**  
 REGISTERED SURVEYORS & LAND INFORMATION CONSULTANTS  
 Suite 1, Level 2, 42 Birnie Avenue Lidcombe, NSW 2141  
 Phone: 9646 5811, Fax: 9646 2311  
 Email: nswsurveying@struc terre.com.au  
 www.struc terre.com.au

**LOCATION PLAN**  
 LAT: -33.92122  
 LONG: 151.09387



F		
E		
D		
C		
B		
A		
No.	AMENDMENT	DATE

CONTOURS SHOWN HAVE BEEN INTERPOLATED FROM SPOT LEVELS TAKEN ON-SITE AND ARE A REPRESENTATION OF THE TOPOGRAPHY ONLY.  
 DIMENSIONS AND AREAS HAVE BEEN DETERMINED FROM PLANS MADE AVAILABLE AT LRS, NSW AND ARE SUBJECT TO FINAL SURVEY.  
 BOUNDARIES HAVE NOT BEEN ACCURATELY DETERMINED.  
 THE RELATIONSHIP OF IMPROVEMENTS & SURVEYED DETAIL TO BOUNDARIES IS DIAGRAMMATIC ONLY.  
 SERVICES SHOWN HAVE BEEN LOCATED WHERE POSSIBLE BY FIELD SURVEY. PRIOR TO ANY SITE WORKS, THE RELEVANT AUTHORITY SHOULD BE CONTACTED TO ESTABLISH ACCURATE POSITION AND DEPTH OF ANY SERVICES.  
 DIMENSIONS OF ANY TREES SHOWN ON THE PLAN ARE APPROXIMATE



**DETAIL & CONTOUR SURVEY**

LOT A / 121 DP 365425  
 AT NO. 33 SHARP STREET, BELMORE

CLIENT: **Burbank** REF: 186670  
*There's no place like home*



SCALE 1: 200 A2

DRAWN: T.N	JOB 3.21.8332.2	DATE: 22.11.2021
CHECKED: J.M	FILE NAME 3.21.8332.2	DATUM: AHD